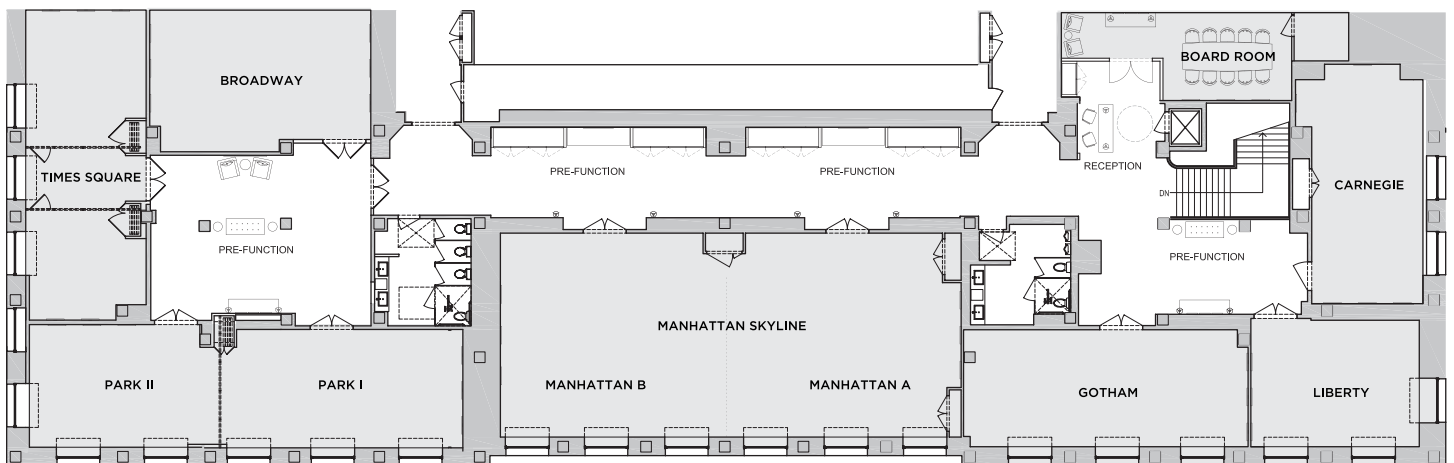


PARK CENTRAL HOTEL NEW YORK

MEZZANINE EVENT SPACE

floorplan



MEZZANINE LEVEL

PARK CENTRAL HOTEL NEW YORK

EVENT SPACE SPECS

	SQ.FEET	DIMENSIONS	CEILING HEIGHT
CARNEGIE	531	38'6" x 14'10"	8'8"
BOARDROOM	220	17'11" x 12'3"	8'8"
LIBERTY	422	18' x 23'8"	9'6"
GOTHAM	634	39'6" x 17'	9'6"
MANHATTAN A	993	35'9" x 28'7"	9'5"
MANHATTAN B	864	29'10" x 28'7"	9'5"
MANHATTAN SKYLINE	1857	65'9" x 28'7"	9'5"
PARK I	609	38' x 16'7"	9'6"
PARK II	460	29'6" x 16'7"	9'6"
TIMES SQUARE	708	43'3" x 16'11"	8'1"
BROADWAY	605	31'1" x 19'9"	8'1"
GRAND BALLROOM	5170	29'9" x 52'4"	14"
FORUM	3348	92'9" x 35'9"	11'5"

PARK CENTRAL HOTEL NEW YORK

EVENT SPACE CAPACITY

	CONFERENCE TABLE	U-SHAPE	THEATER STYLE	CLASSROOM STYLE	ROUND TABLES	DINNER & DANCE	COCKTAIL
CARNEGIE	15	18	46	34	30	—	40
BOARDROOM	10	—	—	—	—	—	—
LIBERTY	16	14	30	20	30	—	35
GOTHAM	25	20	55	45	50	—	65
MANHATTAN A	35	35	80	50	80	—	100
MANHATTAN B	35	35	80	50	80	—	100
MANHATTAN SKYLINE	65	57	200	100	150	120	250
PARK I	25	20	50	40	50	—	45
PARK II	18	16	40	24	30	—	45
TIMES SQUARE	30	25	70	50	60	—	60
BROADWAY	25	20	50	40	50	—	45
GRAND BALLROOM	—	—	400	200	250	—	600
FORUM	—	—	250	100	180	—	250